



@green | energy

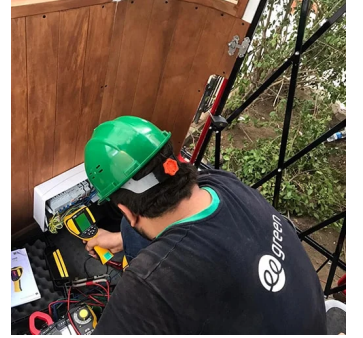
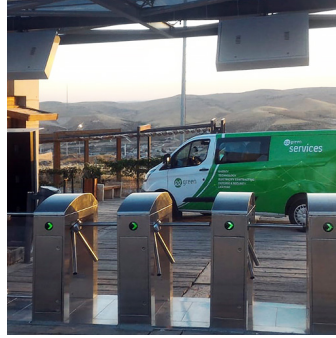
# YEREL DEĞERLER KÜRESEL GELECEK

## Historical Artifacts / Ruins

Our main goal in our electrical installation and lighting solutions for historical monuments and ruins is to protect and emphasize our cultural heritage. In these projects that require sensitivity, we keep energy efficiency and electrical safety standards at the highest level and use special technologies that will not harm the authenticity of the artifacts. With LED-based lighting systems and remotely monitored energy management systems, we protect the traces of history, enrich the visitor experience and minimize energy consumption.

@green | energy

(216) 606 18 00 - (850) 840 24 84  
Green Kampüs, Şehit İsmail Öz Sk.  
No:37, 34752 Ataşehir/İstanbul



## GOBEKLITEPE ARCHAEOLOGICAL SITE

- Renewal of Energy and Security Infrastructure
- Discovery and Installation of Security Cameras
- Turnstile Access Systems
- Information Screens
- Installation of Box Office Equipment
- Installation of Cabinet Systems

### Proje

Ministry of Culture and Tourism

### Yer

Haliliye / Şanlıurfa

Göbeklitepe is located 15 kilometres northeast of Şanlıurfa and is considered the oldest known temple complex in the world. Dating back to 9600 BC, Göbeklitepe represents an important turning point in human history. There are obelisks and animal figures in the temple complex. Discovered in 1995 and excavations are still ongoing, Göbeklitepe was included in the UNESCO World Heritage List in 2018. Göbeklitepe is an indispensable visit for archaeology and history enthusiasts.



(216) 606 18 00 - (850) 840 24 84  
Green Kampüs, Şehit İsmail Öz Sk. No:37,  
34752 Ataşehir/İstanbul