



@green | energy

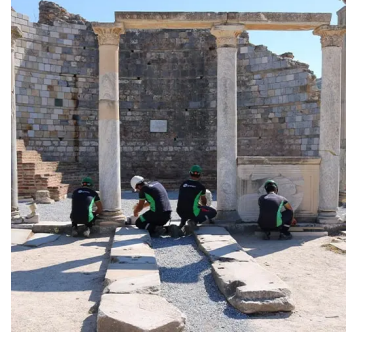
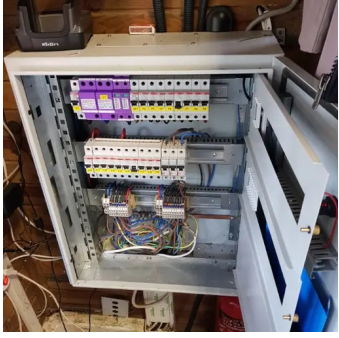
YEREL DEĞERLER KÜRESEL GELECEK

Historical Artifacts / Ruins

Our main goal in our electrical installation and lighting solutions for historical monuments and ruins is to protect and emphasize our cultural heritage. In these projects that require sensitivity, we keep energy efficiency and electrical safety standards at the highest level and use special technologies that will not harm the authenticity of the artifacts. With LED-based lighting systems and remotely monitored energy management systems, we protect the traces of history, enrich the visitor experience and minimize energy consumption.

@green | energy

(216) 606 18 00 - (850) 840 24 84
Green Kampüs, Şehit İsmail Öz Sk.
No:37, 34752 Ataşehir/İstanbul



ANTALYA PATARA RUINS

- Renewal of Energy and Security Infrastructure
- Discovery and Installation of Security Cameras
- Turnstile Access Systems
- Information Screens
- Installation of Box Office Equipment
- Installation of Cabinet Systems
- Electricity Contracting

Proje

Ministry of Culture and Tourism

Yer

Kaş / Antalya

Patara is an ancient Lycian city located near the Kas district of Antalya. Patara, an important harbour city in ancient times, is also famous for the Temple of Apollo and the parliament building. Patara Beach is also located near this ancient city and is known for its natural beauty. In 2020, with the declaration of "Patara Year", interest in this historical and touristic region has increased even more. Patara is a unique destination where history and nature are intertwined.



(216) 606 18 00 - (850) 840 24 84
Green Kampüs, Şehit İsmail Öz Sk. No:37,
34752 Ataşehir/İstanbul