



@green | energy

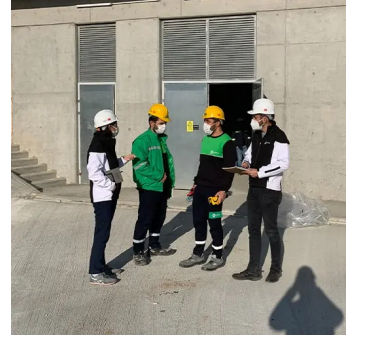
YEREL DEĞERLER KÜRESEL GELECEK

Historical Artifacts / Ruins

Our main goal in our electrical installation and lighting solutions for historical monuments and ruins is to protect and emphasize our cultural heritage. In these projects that require sensitivity, we keep energy efficiency and electrical safety standards at the highest level and use special technologies that will not harm the authenticity of the artifacts. With LED-based lighting systems and remotely monitored energy management systems, we protect the traces of history, enrich the visitor experience and minimize energy consumption.

@green | energy

(216) 606 18 00 - (850) 840 24 84
Green Kampüs, Şehit İsmail Öz Sk.
No:37, 34752 Ataşehir/İstanbul



ÇANAKKALE TROIA MUSEUM

- Renewal of Energy and Security Infrastructure
- Discovery and Installation of Security Cameras
- Turnstile Access Systems
- Information Screens
- Installation of Box Office Equipment
- Installation of Cabinet Systems
- Electricity Contracting

Proje

Ministry of Culture and Tourism

Yer

Merkez / Çanakkale

Troy is located in Çanakkale and is an ancient city that is the subject of Homer's Iliad epic. The history of Troy dates back to approximately 5000 years ago. The Troy Museum exhibits the artefacts excavated in the region and offers visitors the opportunity to discover the rich history of Troy. A UNESCO World Heritage Site, Troy is known for its historical and mythological importance.



(216) 606 18 00 - (850) 840 24 84
Green Kampüs, Şehit İsmail Öz Sk. No:37,
34752 Ataşehir/İstanbul