



@green | energy

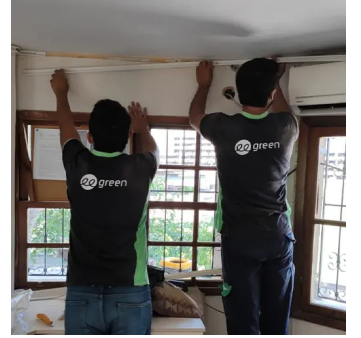
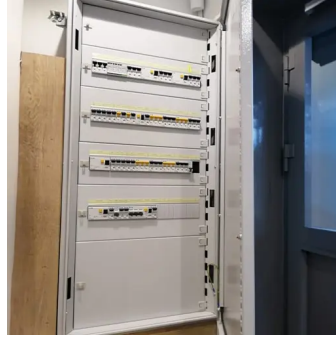
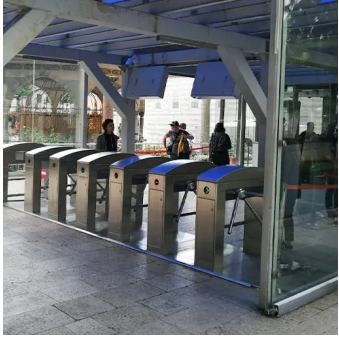
YEREL DEĞERLER KÜRESEL GELECEK

Historical Artifacts / Ruins

Our main goal in our electrical installation and lighting solutions for historical monuments and ruins is to protect and emphasize our cultural heritage. In these projects that require sensitivity, we keep energy efficiency and electrical safety standards at the highest level and use special technologies that will not harm the authenticity of the artifacts. With LED-based lighting systems and remotely monitored energy management systems, we protect the traces of history, enrich the visitor experience and minimize energy consumption.

@green | energy

(216) 606 18 00 - (850) 840 24 84
Green Kampüs, Şehit İsmail Öz Sk.
No:37, 34752 Ataşehir/İstanbul



HAGIA SOPHIA KEBIR MOSQUE

- Renewal of Energy and Security Infrastructure
- Discovery and Installation of Security Cameras
- Turnstile Access Systems
- Information Screens
- Box Office Hardware Installation
- Installation of Cabinet Systems

Proje

Ministry of Culture and Tourism

Yer

Fatih / İstanbul

Hagia Sophia is located in the Sultanahmet neighbourhood of Istanbul and was built by the Byzantine Emperor Justinian I in the 6th century. In 1453, Hagia Sophia was converted into a mosque with the conquest of Istanbul and started to serve as a museum in 1935. In 2020, it started to be used as a mosque again. Hagia Sophia is an important building for both the Christian and Islamic world with its magnificent mosaics and architecture. Hagia Sophia, which is on the UNESCO World Heritage List, offers its visitors a historical and cultural journey.



(216) 606 18 00 - (850) 840 24 84
Green Kampüs, Şehit İsmail Öz Sk. No:37,
34752 Ataşehir/İstanbul